

INSTALLATION & MAINTENANCE INSTRUCTIONS

Tools Required

- Utility Knife
- Straight Edge
- Tape Measure
- Small Rubber Mallet
- Spacers
- Installation Block

THIS PRODUCT HAS UNDERLAYMENT PRE-ATTACHED

Prior to Installation

- Carefully check flooring relative to any defects. Contact your supplier immediately if any details are found.
- Room temperature shall be no less than 57°F (10°C) for 24 hours before, during and after installation.
- Remove surplus floor material 15 minutes prior to installation.
- Underlayment meeting the bottom of the flooring.
- Calcium must be placed thoroughly at all times.
- Protect corners from damage.

Wood Substrates

Wood floors must be double construction with a minimum thickness of 1" free from spring deflection. Top layer of plywood shall be 1/4" minimum thickness underlayment grade plywood.

Concrete Substrates

RigiCore may be installed over on plastic, stone, granite, or other plastic concrete substrates. Concrete floors shall be constructed in accordance with the American Concrete Institute (ACI) 302.1 Guide for Concrete Floor and Slab Construction. Concrete shall be finished and cured according to ACI and have a minimum compressive strength of 4500 psi. Installation of moisture vapor barrier is recommended prior to pouring of on or below grade slabs. Moisture vapor transmission shall not exceed 0.020 in 24 hours per ASTM F1876 (Anhydrous Calcium Chloride Test). Moisture may also be tested according to ASTM F2170 (Standard Test Method for Determining Relative Humidity in Concrete Floor Slabs) in the process. When tested according to this method, the internal relative humidity shall not exceed 75%. RigiCore may be installed over gypsum based underlayment.

Existing Floors

RigiCore may be installed over most smooth, single layer, hard surface existing floors. Check flooring for any curled areas around the perimeter or at seams and repair if necessary. Use a good quality cementitious baseboard embedding leveler to smooth and fill the existing floor.

WARNING

Do not sand, dry sweep, dry scrape, oil, wax, beadblast or mechanically chip or pulverize existing resilient flooring, backing, fling felt or asphaltic "tackback" adhesive. These products may contain asbestos fibers or crystalline silica. Avoid creating dust. Inhalation of such dust is a cancer and respiratory tract irritant. This product contains no asbestos.

Substrate Preparation

- All substrates must be dry, clean, smooth, level, free from all existing adhesive residues and free from movement or deflection.
- The substrate must be level within 3/16" over a 10ft. area.
- Fill and level all plywood seams and concrete cracks, construction joints, control joints, depressions, grooves or other irregularities with a fine feather, cementitious patching compound.
- Some interior corner substrates to remove all dust and debris.

Getting Started

- RigiCore is a floating floor and should not be glued or nailed to the substrate.
- RigiCore is intended for indoor use only.
- Determine in which direction the planks will be installed. It is preferred to lay the planks parallel to the longest room dimension.
- Do not install adjacent to doors.
- Carefully measure the room to determine squareness and level of the subfloor. The width of the first row can not be less than 2" existing floor tongue. The width of the first row will need to be cut accordingly.
- A minimum of 2" of expansion space is required around the perimeter of the room and all vertical obstructions.
- The typical procedure for protecting the substrate and surrounding areas is as follows: Do not install damaged plants. The typical procedure for protecting the substrate and surrounding areas is as follows: Do not install damaged plants. During installation, inspect the groove area and remove any debris that may impede proper assembly of planks.

Installation

1. Begin laying planks from the left side of the starting wall and work to the right side. The tongue side of the plank shall face the starting wall.
2. Place 2" spacers between the front and long side of the planks and the wall. Always position one spacer between the wall and the first plank edge or joint.
3. The joints of the planks in this row are attached by rotating the tongue side into the groove one of the previous planks at a 90 degree angle. Generally, leave the plank from above and the end of the groove. Check the planks are perfectly aligned.
4. Check remaining for planks in this row.
5. The last plank in the first row will need to be cut. Measure the distance between the wall and the surface of the last full plank. Subtract 5/16" from this measurement to allow for the spacer. This measurement is then cut. The length of the first plank in this row must be cut. This will allow for a larger plank at the end of the row. The first and last planks in each row must be at least 2" in length. Check and cut using utility knife and straight edge systems square. Close the bottom of the plank with utility knife, and then snap the plank at the joint line.
6. The remaining space at the end of the first plank is the first row. The first plank in the second row provided is at least 2" long. Always stagger joints from row to row a minimum of 2".
7. Install the long side of the first piece of the association. Remember to place a 2" spacer between the wall and the short side of the plank. Insert the long side into the groove side of the previous row at a 90 degree angle and level to the substrate.
8. Install the second plank in this second row. Position the long side of the plank into the groove overlapping the groove of the planks in the previous row approximately 1/2". Then angle the end joint into the previous plank. Angle the plank up and verify that the tongue locks into the groove. Check and verify remaining space in the expansion row. It is important to make sure the first row is not too tight or too loose as this will affect the entire installation.
9. Continue working from left to right row by row. Be sure to maintain a 2" gap around all walls and vertical objects and maintain a random appearance in your layout. Offset all joints a minimum of 2".

Finishing the Installation

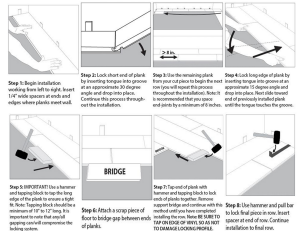
- After all planks have been installed, remove spacers from the perimeter of the room.
- Install baseboard moldings. Do not bottom any moldings to or through the flooring.
- Protect and maintain quality of investment flooring by the wall. Leaving mold to sufficient size to cover the 2" space between the floor and the wall.
- Use plywood to cover the top of the flooring when moving heavy furniture or appliances into position.
- Use proper care when sanding and waxing the surface.
- Post installation temperatures must be maintained between 57°F and 80°F along with the relative humidity must be maintained between 40% and 70%.

Maintenance

Please follow the recommendations in this guide to retain the best look and protect the finish of the floor. After installing the floor, an occasional wet mopping to remove any dirt and debris that may have been introduced during the installation process. Also, in order to protect the flooring surface from abrasive dirt and debris, we recommend installing an effective barrier system to limit the amount of dirt, dust, and grit that may enter the flooring area. Please check any new cleaning agents in a small test patch on the floor in an inconspicuous area, and avoid using harsh cleaners or ammonia based cleaning products.

1. First, sweep and vacuum the floor surface to remove all dirt, dust, grit, and debris. Using a damp mop, scrub the flooring surface using water, clean water, soap and detergent or as needed. The use of a dry mop or wet vacuum is recommended.
2. Do not allow any sharp edged metals to damage your RigiCore flooring. If they remain in view, re-sanding to the surface. The surface finish for all sharp edged metals should be done before proper use of the floor.
3. Avoid exposure to direct sunlight for prolonged periods of time. During peak sunlight hours, use drapes or blinds to minimize the direct sunlight on the RigiCore flooring. Direct sunlight can affect the appearance of the flooring. In addition, excessive temperatures are not recommended. Long term continuous high temperatures over 80°F combined with direct sunlight will damage the flooring and cause the installation to fail. Some metals embedded in the floor can conduct in a rapid heat transfer should be considered.
4. Do not use wax on the flooring. The finish of your floor is very durable and non-wax, which prevents wax from penetrating and thus builds up a pad for rubbing and dirt collection. The same non-wax surface also provides all the protection against wear and staining that you will need.
5. If your floor has been exposed to excessive amounts of water due to flooding, do not panic. RigiCore is waterproof. Simply remove the water as quickly as possible. A dehumidifier should be properly operated in the room to reduce the moisture levels back to normal. Do not dry the room below the normal moisture level that existed previously.

INSTALLATION GRAPHICS



*PLEASE NOTE: The use of a tapping block is not necessary to install your floor. The use of a tapping block, pull bar, and rubber mallet must be used exclusively to cut and separate the expansion system or physical appearance of the floor. Damage resulted from use of a tapping block or mallet will not be accepted and all warranty will void for material affected.

LENGTH OF AREA

WIDTH (AREA)	LENGTH OF AREA																			
	2'	3'	4'	5'	6'	7'	8'	9'	10'	11'	12'	13'	14'	15'	16'	17'	18'	19'	20'	
2'	4	6	8	10	12	14	16	18	20	22	24	26	28	30	32	34	36	38	40	
3'	6	9	12	15	18	21	24	27	30	33	36	39	42	45	48	51	54	57	60	
4'	8	12	16	20	24	28	32	36	40	44	48	52	56	60	64	68	72	76	80	
5'	10	15	20	25	30	35	40	45	50	55	60	65	70	75	80	85	90	95	100	
6'	12	18	24	30	36	42	48	54	60	66	72	78	84	90	96	102	108	114	120	
7'	14	21	28	35	42	49	56	63	70	77	84	91	98	105	112	119	126	133	140	
8'	16	24	32	40	48	56	64	72	80	88	96	104	112	120	128	136	144	152	160	
9'	18	27	36	45	54	63	72	81	90	99	108	117	126	135	144	153	162	171	180	
10'	20	30	40	50	60	70	80	90	100	110	120	130	140	150	160	170	180	190	200	
11'	22	33	44	55	66	77	88	99	110	121	132	143	154	165	176	187	198	209	220	
12'	24	36	48	60	72	84	96	108	120	132	144	156	168	180	192	204	216	228	240	
13'	26	39	52	65	78	91	104	117	130	143	156	169	182	195	208	221	234	247	260	
14'	28	42	56	70	84	98	112	126	140	154	168	182	196	210	224	238	252	266	280	
15'	30	45	60	75	90	105	120	135	150	165	180	195	210	225	240	255	270	285	300	
16'	32	48	64	80	96	112	128	144	160	176	192	208	224	240	256	272	288	304	320	
17'	34	51	68	85	102	119	136	153	170	187	204	221	238	255	272	289	306	324	342	
18'	36	54	72	90	108	126	144	162	180	198	216	234	252	270	288	306	324	342	360	
19'	38	57	76	95	114	133	152	171	190	209	228	247	266	285	304	324	344	364	384	
20'	40	60	80	100	120	140	160	180	200	220	240	260	280	300	320	340	360	380	400	

* Please account for 5%-10% more material than needed for project